



ALTama Park Improvements

Student Reflection:

With doing this project we gained a deeper knowledge of working alongside others and the community to improve the needs of the Brunswick community.



A view from the street.

Group 3: Shelby Yawn, Alacia Parham, Nora Cryder

Faculty: Dr. Mary McGinnis

Class: English 1101

Advisor: Dave Austin

Community

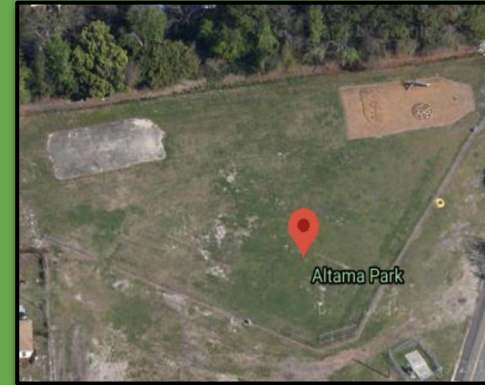
Partner: Glynn County Public Works

How you can help:

Visit the park and take the survey!



Hornet Dr, Altama Park
Brunswick, Ga 31525



The current playground.



Objectives:

- Community members will be able to take the survey of what they want to see done with the park.
- Glynn county public works will be able to improve park based on survey.
- We want to ensure that the community is satisfied with park improvements.

Background:

The Glynn County Public Works had already painted the fence to give it a nicer look, along with improving the basketball courts. Doing this, they still saw little activity in the park. Therefore, we reached out to them in order to gain livelihood in the park.